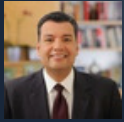


# 2018 ENDORSED CANDIDATES for the June 5, 2018 Primary Election

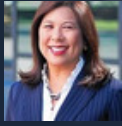
SAN BERNARDINO  
COUNTY  
DEMOCRATIC PARTY



## STATEWIDE CANDIDATES



Secretary of State  
**ALEX PADILLA**



Controller  
**BETTY YEE**



Treasurer  
**FIONA MA**



Insurance Commissioner  
**RICARDO LARA**



Superintendent of Public Instruction  
**TONY THURMOND**

## STATEWIDE PROPOSITIONS

Proposition 68  
**YES**

Proposition 69  
**YES**

Proposition 70  
**NO**

Proposition 71  
**YES**

Proposition 72  
**YES**

## U.S. HOUSE OF REPRESENTATIVES



CD08 **MARGE DOYLE**



CD27 **JUDY CHU**

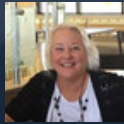


CD31 **PETE AGUILAR**

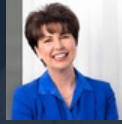


CD35 **NORMA TORRES**

## STATE SENATE



SD16 **RUTH MUSSER-LOPEZ**

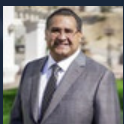


SD20 **CONNIE LEYVA**

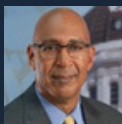


SD29 **OPPOSE RECALL OF SEN. JOSH NEWMAN**

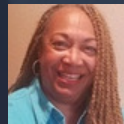
## STATE ASSEMBLY



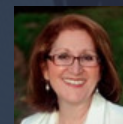
AD40 **JAMES RAMOS**



AD41 **CHRIS HOLDEN**



AD42 **DENI ANTIONETTE MAZINGO**



AD47 **ELOISE REYES**



AD55 **GREGG FRITCHLE**

## COUNTY OF SAN BERNARDINO



Member, Board of Supervisors District 4  
**GLORIA NEGRETE-MCLEOD**



Auditor-Controller/Treasurer/Tax Collector  
**OSCAR VALDEZ**

## CITY OF SAN BERNARDINO

Mayor  
(No Consensus) **VOTE DEMOCRATIC**

Ward 1  
**GIL BOTELLO**

Ward 2  
**SANDRA IBARRA**

Ward 4  
**JESUS MEDINA**

## CITY OF LOMA LINDA

Loma Linda City Council  
**GABRIEL URIBE**

## LOCAL BALLOT MEASURES

Town of Yucca Valley  
**MEASURE L - YES**

City of Rialto  
**MEASURE M - YES**